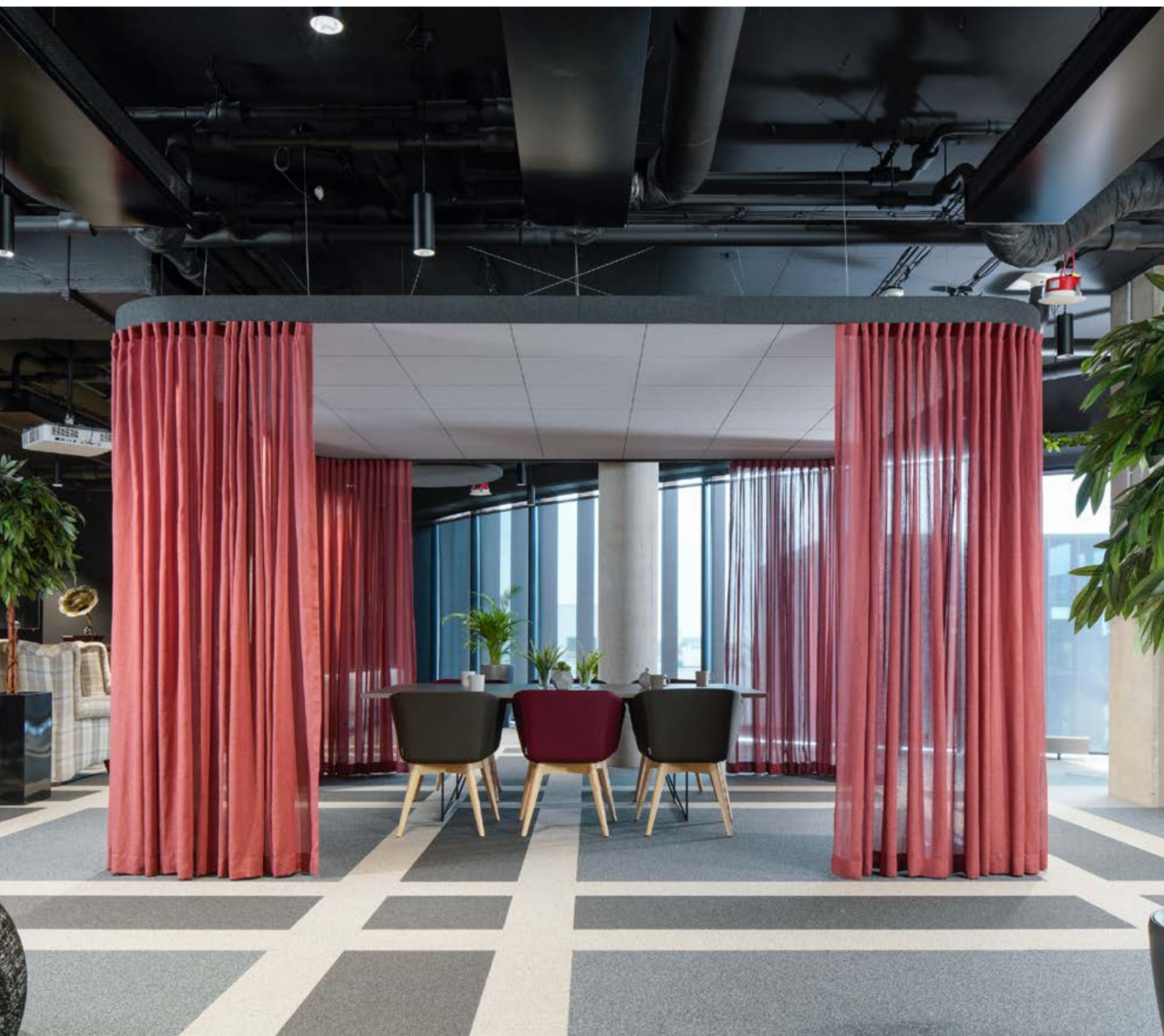


DATASHEET

Rockfon Hub®



Sounds Beautiful

Rockfon Hub®

- The platform brings multipurpose flexibility to your interiors by creating breakout spaces where people can think, work or talk in peace
- The soft island shapes can be enhanced with a felt frame cover, mood lighting and curtains to create calm or cosy areas where people can work productively without disturbance
- Rockfon Hub® is delivered as a complete kit contributing to easy and hassle-free installation

Product Description

Rockfon Hub® is available in 4 dimensions:

3000 x 4800mm (small) - weight 82.4kg

3600 x 4200mm (medium) - weight 80.1kg

4800 x 4800mm (large) - weight 118.4kg

4800 x 7200mm (extra large) - weight 160.7kg

Black anodized frame in an organic shape.

Felt in three different colors: light grey, dark grey, white.

Pre-selected concealed tiles: white with Rockfon Blanka® or colours with Rockfon Color-all®.

Application Areas

- Office
- Leisure
- Education
- Retail

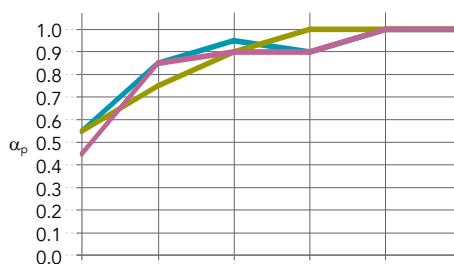
Product group	Product image	Component description	Length x Width x Height (mm)	Pcs per pack	Kg per pack
		Rockfon Blanka®	600 x 600 x 22	10	13,3
		Rockfon Color-all®		10	13,3
HUB FRS		Frame Profile Straight	3000 x 35 x 110	2	13,8
			1800 x 35 x 110	2	8,2
			3600 x 35 x 110	2	16,5
			2400 x 35 x 110	2	11
HUB FRC		Frame Profile Corner	1066 x 35 x 110	4	9,8
HUB CAS		Carrier Profile	3576 x 40 x 40	1	7,2
			2976 x 40 x 40	1	6
			1200 x 40 x 40	1	2,4
			868 x 40 x 40	1	1,8
HUB CON		Frame Profile Coupling			
HUB SCREW M6		Coupling Screw			
HUB CON		Profile Connector			
		Inter Connector R			
		Intersection Clip			
HUB HHSS		M6 Hammer Head Screw			
HUB WIRE		Vertical Wire Set			
		Bracing Wire Set			
HUB GLI		Curtain Rollers			
T24 MR CL&HK		Main runner T24 Click / Hook	3600 x 24 x 38	15	19,5
T24 CT CLICK			600 x 24 x 38	45	8,2
HUB FELT		Felt Cover			
HUB MOLD		Cutting template		1	0,5



Performance



Sound absorption
 α_w : 0.95 (Class A)



Edge / Thickness (mm) /
 Suspension (incl. tile - mm)

	125 Hz	250 Hz	500 Hz	1000 Hz	2000 Hz	4000 Hz	α_w	Absorption class	NRC
Blanka X: 22 / 200	0.55	0.85	0.95	0.90	1.00	1.00	0.95	A	0.95
Blanka X: 22 / 1000	0.55	0.75	0.90	1.00	1.00	1.00	0.95	A	0.95
Color-all X: 22 / 200	0.45	0.85	0.90	0.90	1.00	1.00	0.95	A	0.95



Reaction to fire
 A1
 (tiles and grid components)



Recyclability
 Fully recyclable stone wool



Cleaning
 - Vacuum



Indoor environment
 Rockfon ceiling products are classified in Class E1 in accordance with EN 13964 (EN 717-1).



Hygiene
 Stone wool provides no sustenance to microorganisms



Material Health
 All materials used in Rockfon products are screened against the technical checklist A20 and the list of substances restricted under REACH and do not contain substances of very high concern (SVHC). Rockfon stone wool fibres comply with safe fibre EU regulation and hold a EUCB certification.



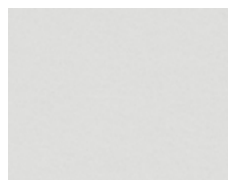
Load Bearing Capacity
 17 kg/m

Colours

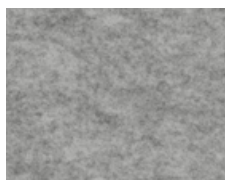
Stone - 01 NCS S 2000-N	Charcoal - 09 NCS S 8500-B	Anthracite - 08 NCS S 7010-R90B	Concrete - 06 NCS S 6000-N	White NCS S 0500-N
Storm - 48 NCS S 6020-R90B	Azure - 47 NCS S 3020-B	Sage - 31 NCS S 3010-G10Y	Eucalyptus - 32 NCS S 6020-B90G	

NCS codes are closest colour match. The actual colour of the islands may deviate slightly from printed colours due to the texture of the surface and the underlying colour of stone wool.

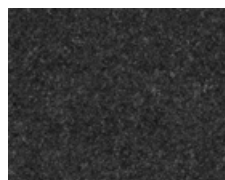
Felt Cover



White



Light grey



Dark grey

Sounds Beautiful

