

DATASHEET

# Rockfon Contour®



**Sounds Beautiful**

# Rockfon Contour®




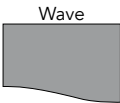
- Aesthetically superior, frameless acoustic baffles
- Very quick and easy to install
- Create strong statement ceiling design using wave shapes in playful and mood creating patterns
- Ideally suited for enhancing acoustics in thermal mass areas or where frequent and unhindered access to services is required
- Use alone or in combination with an existing acoustic ceiling to enhance the sound absorption

## Product Description

- Stone wool baffle
- Surface: smooth, matt white fleece
- Edge: matt white structured paint
- 4 rectangular shapes and 3 modular wave shapes
- Suspension points integrated in the baffle

## Application Areas

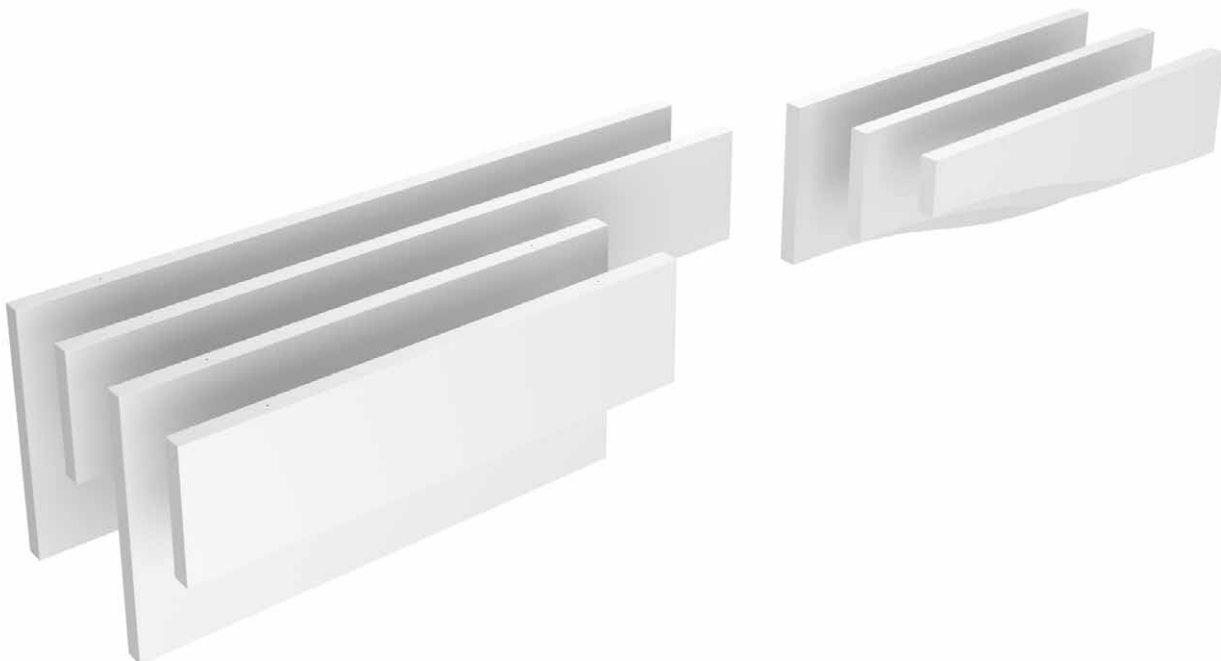
- Education
- Retail
- Healthcare
- Industry
- Office
- Leisure

Edge detail	Shapes	Module size (mm)	Weight (kg/unit)	Recommended installation System**	Recycled content	Cradle to Cradle Certified®	A1-A3 Production stage impact (kg CO <sub>2</sub> eq/m <sup>2</sup> )*	A1-C4 Full life cycle impact (kg CO <sub>2</sub> eq/m <sup>2</sup> )*
	Rectangle 	1200 x 300 x 50	2.2	Rockfon® System Contour Baffle™	38%		6.08	7.97
		1800 x 300 x 50	3.3	Rockfon® System Contour Baffle™				
		1200 x 600 x 50	4.4	Rockfon® System Contour Baffle™				
		1800 x 600 x 50	6.5	Rockfon® System Contour Baffle™				
	Wave 	1200 x 150-300 x 50	1.7	Rockfon® System Contour Baffle™				
		1200 x 300-450 x 50	2.7	Rockfon® System Contour Baffle™				
		1200 x 450-600 x 50	3.8	Rockfon® System Contour Baffle™				

Contact us for special sizes, lead times and minimum quantities.

\*\*We recommend not to install Rockfon Contour in areas subject to direct wind load e.g. from fans or constant drafts.

\* For full environmental impact disclosure, see our product EPDs available on [rockfon.link/int-epd](https://rockfon.link/int-epd). Due to differences in calculation methods and scenario assumptions, environmental impact values are generally not directly comparable between manufacturers.





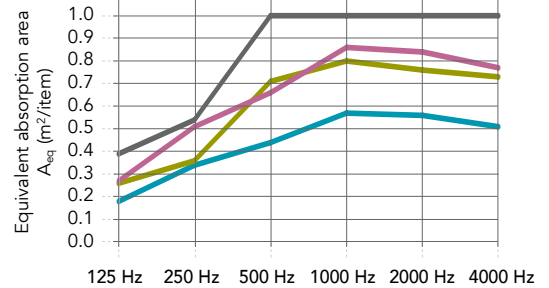
## Performance



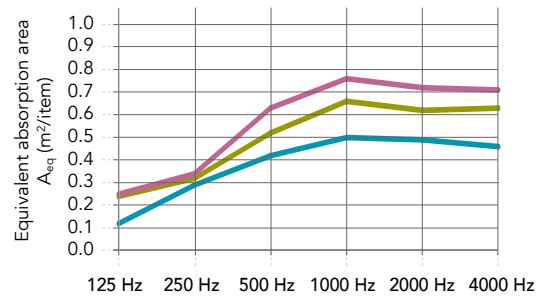
### Sound absorption

$A_{eq}$  (m<sup>2</sup>/item)

\*) Values obtained on the basis of theoretical analysis. More data available on  $A_{eq}$  and  $\alpha_w$  values. For more information, contact your local sales support



	125 Hz	250 Hz	500 Hz	1000 Hz	2000 Hz	4000 Hz
Rectangular 1200x300x50 mm: single baffle (1 baffle/m <sup>2</sup> ; row distance: 83 cm)	0.18	0.34	0.44	0.57	0.56	0.51
Rectangular 1200x600x50 mm: single baffle (1 baffle/m <sup>2</sup> ; row distance: 83 cm)	0.26	0.36	0.71	0.80	0.76	0.73
Rectangular 1800x300x50 mm: single baffle (0,7 baffle/m <sup>2</sup> ; row distance: 83 cm)*	0.27	0.51	0.66	0.86	0.84	0.77
Rectangular 1800x600x50 mm: single baffle (0,7 baffle/m <sup>2</sup> ; row distance: 83 cm)*	0.39	0.54	1.07	1.20	1.14	1.09



	125 Hz	250 Hz	500 Hz	1000 Hz	2000 Hz	4000 Hz
Wave 1200x150/300x50 mm: single baffle (1 baffle/m <sup>2</sup> ; row distance: 83 cm)	0.12	0.29	0.42	0.50	0.49	0.46
Wave 1200x300/450x50 mm: single baffle (1 baffle/m <sup>2</sup> ; row distance: 83 cm)	0.24	0.32	0.52	0.66	0.62	0.63
Wave 1200x450/600x50 mm: single baffle (1 baffle/m <sup>2</sup> ; row distance: 83 cm)	0.25	0.34	0.63	0.76	0.72	0.71



### Reaction to fire

A1



### Light reflection

79%



### Humidity and sag resistance

Up to 100% RH.

Rockfon Contour is not suitable for use in swimming pools or outdoors.

For more information, please contact Rockfon.



### Cleaning

- Vacuum



### Hygiene

Stone wool provides no sustenance to microorganisms



### Recyclability

Fully recyclable stone wool



### Indoor environment

Rockfon ceiling products are classified in Class E1 in accordance with EN 13964 (EN 717-1). Rockfon ceiling products have a very low release of VOCs. A selection of Rockfon products have achieved the following performance levels and labels in indoor air emissions:



### Material Health

All materials used in Rockfon products are screened against the list of substances restricted under REACH and do not contain substances of very high concern (SVHC). Rockfon stone wool fibres comply with the safe fibre EU regulation and hold an EUCEB certification.

# Sounds Beautiful

